

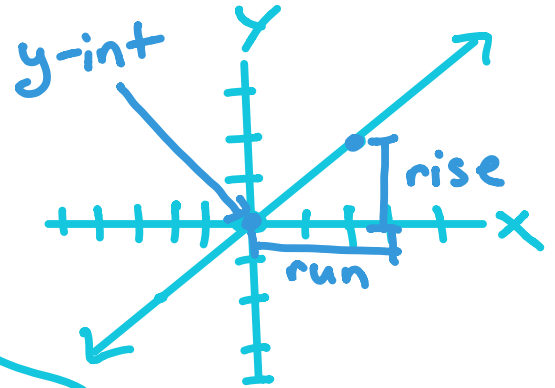
LINEAR FUNCTIONS

Equations of lines

$$y = mx + b$$

$m = \text{slope} = \frac{\text{rise}}{\text{run}}$

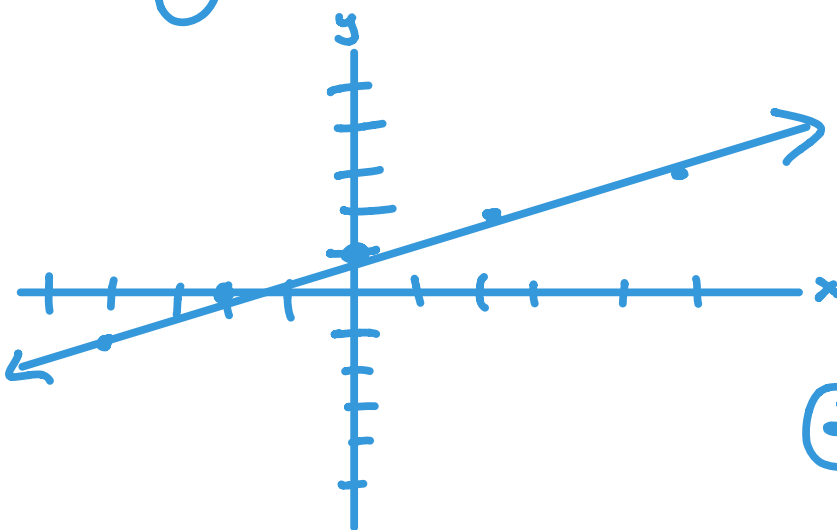
"rise over run"



$b = \text{y-intercept}$
"line intercepts y-axis"

Graph & find slope & y_{int}

$$y = \frac{1}{2}x + 1$$



① START @ THE $y\text{-int}$

$$b = 1$$

② PLOT BASED OF SLOPE

$$m = \frac{1}{2} = \frac{1 \text{ rise}}{2 \text{ run}}$$

"LEFT TO RIGHT"